

## Oxy-Fuel Outfits - Refrigeration/Air Conditioning



**S6**  
Single Flame Tip

**T7**  
Twin Flame Tip

**C2**  
"C" Style Tip

**14711**  
Heating Tip



**23-5005A**  
(Adapts to A or B Style  
Regulator Connections)

### Quickbraze® Tip Data Chart

Stock Number	Gas Pressures PSIG Settings		Consumption Rate (CFH)		BTU Output/Hr	Brazing Capacity Copper Pipe
	Oxygen	Fuel	Oxygen	Fuel		
<b>S4</b>	8	8	0.8	0.6	1,120	1/4" - 3/8"
<b>S6</b>	8	8	3.2	3.4	7,360	1/2" - 3/4"
<b>T7</b>	8	8	9.8	7.6	12,200	5/8" - 1-3/8"
<b>C2*</b>	7	5	6.4	7.2	12,350	1/2" - 1-1/8"
<b>C6*</b>	10	8	9.6	10.8	19,720	7/8" - 1-5/8"
<b>14711*</b>	12	10	14.7	9.7	13,760	1/2" - 1-5/8"
<b>A3</b>	8	8	8.4	7.2	6,600	3/4" - 1-3/8"
<b>LP2*</b>	25	10	26	6	14,500	7/8" - 1-5/8"

\*For use with Oxy-Acetylene only.



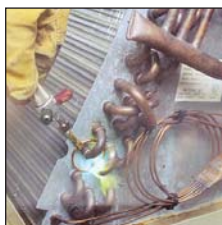
**Caddy Kit - 23-5004A**  
Tips Supplied Braze To 1-1/8" (29mm)

Kit Stock Number	Torch Assembly	Single Flame Tip	Twin Flame Tip	"C" Style Tip	Multi-Flame	Regulators	Accessories
<b>23-5004A*</b>	11-1114 "B" - 9/16" Hose Fittings	S6	T7	C2	14711	30-20-540, 30-15-200	Cylinder Caddy Carrier, Striker, Check Valves & Operations Manual
<b>23-5005A**</b>	11-1116 "A" - 3/8" Hose Fittings						"A" to "B" Hose Adaptors & Operations Manual (Hose may be attached to "A" or "B" Regulator Fittings)

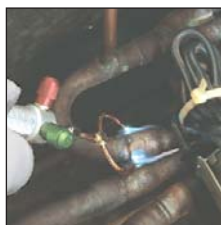
**NOTE:** All outfits include complete instruction and operation manual. Outfits with regulators, include reverse flow safety check valves.



Brazes solenoid and expansion valves so quickly that heat is unable to transfer to internal parts, protecting them from damage and eliminating the need for messy and costly heat sink materials.



Twin flame tips solder coil return bends quickly and evenly; concentrated heat will not heat and loosen surrounding joints.



Twin flame or patented "C" Style tips quickly braze reversing valves without burning internal components.



Revolutionary patented "C" style tips provide 100% flame wrap for fast, efficient, even heating. Heat produced is confined to the joint area protecting surroundings from burning. "C" style tips also assure even heat on the blind side of the braze joint.



Accumulators can be brazed extremely fast by simply laying the patented "C" style tip near the joint.

